



## BHH Self Catering Apartments Tariff 2026

	7 NTS SAT- SAT	3 NTS FRI - MON	4 NTS MON - FRI		7 NTS SAT- SAT	3NTS FRI- MON	4NTS MON- FRI
Jan 1 - Jan 3	1190	645	660	Jul 4 - Jul 11	1995	/	/
Jan 3- Jan 10	1190	645	660	Jul 11 - Jul 18	1995	/	/
Jan 11 - Jan 17	1190	645	660	Jul 18 - Jul 25	2266	/	/
Jan 17 - Jan 24	1190	645	660	Jul 25 - Aug 1	2266	/	/
Jan 24 - Jan 31	1190	645	660	Aug 1 - Aug 8	2266	/	/
Jan 31 - Feb 7	1190	645	660	Aug 8 - Aug 15	2266	/	/
Feb 7 - Feb 14	1456	825	720	Aug 15 - Aug 22	2266	/	/
Feb 14 - Feb 21	1456	825	880	Aug 22 - Aug 29	2266	/	/
Feb 21 - Feb 28	1456	825	880	Aug 29 - Sept 5	2266	/	/
Feb 28 - Mar 7	1395	790	860	Sept 5 - Sept 12	2240	/	/
Mar 7 - Mar 14	1395	790	860	Sept 12- Sept 19	2000	/	/
Mar 14 - Mar 21	1395	790	860	Sept 19 - Sept 26	2000	/	/
Mar 21 - Mar 28	1470	945	896	Sept 26 - Oct 3	1855	972	960
Mar 28 - Apr 4	1680	998	998	Oct 3 - Oct 10	1670	915	920
Apr 4 - Apr 11	1680	998	998	Oct 10- Oct 17	1670	915	920
Apr 11- Apr 18	1680	998	998	Oct 17 - Oct 24	1730	975	975
Apr 18 - Apr 25	1680	975	992	Oct 24 - Oct 31	1730	975	975
Apr 25 - May 2	1750	1035	998	Oct 31 - Nov 7	1350	775	695
May 2 - May 9	1750	1035	998	Nov 7 - Nov 14	1350	775	695
May 9 - May 16	1750	1035	998	Nov 14 - Nov 21	1350	775	695
May 16 - May 23	1875	1130	1130	Nov 21 - Nov 28	1350	775	695
May 23 - May 30	1875	1130	1130	Nov 28 - Dec 5	1350	775	695
May 30 - Jun 6	1875	1130	1130	Dec 5 - Dec 12	1350	775	695
Jun 6 - Jun 13	1875	1130	1130	Dec 12 - Dec 19	1575	885	840
Jun 13 - Jun 20	1875	1130	1130	Dec 19 - Dec 26	1750	1110	1150
Jun 20 - Jun 27	1875	1130	1130	Dec 26 - Jan 2 2027	1750	1110	1150
Jun 27 - Jul 4	1995	/	/				

Our apartments comprise of a bedroom which can be made as a super king double or if preferred twin beds (tv, radio, hairdryer, beds made & towels provided) with a sofa bed in the living area if required. They are suitable for two adults or two adults and two children. Bathroom with step in shower. The living area is open plan (smart tv, wifi, binoculars) with a kitchen & dining area (dishwasher, microwave, small fridge with freezer shelf, kettle, toaster, oven & hob) enjoying superb sea views with outside seating. One reserved under cover parking space with coded access. Washing machine, dryer & ironing room facility. Use of hotel facilities including indoor swimming pool & Hot tub during your stay.

Inclusive options available for dining in the hotel, see over. To get you started a loaf of bread, pint of milk, a few teabags & coffee servings will be ready for you. If a cot is required available on booking £10.00 per stay or perhaps a high chair £5.00 per stay.

### Inclusive package upgrade:

Why not upgrade to our inclusive package, enjoying dinner (3 Courses & Coffee from our Table d'hôte Menu) and breakfast served daily in the main hotel, this guarantees a table will be available for you in one of our dining areas, housekeeping will also visit daily to empty your bins, make your bed and vacuum if required costing £60.00 per person per day.

### Celebration Breaks—Treat that Someone Special...

Flowers, Chocolates & Champagne in the room	£99.00
Flowers, Chocolates & A Bottle of Wine in the room	£76.00
Prosecco, Flowers & Chocolates in the room	£69.00

We can also arrange Celebration cakes or other special requirements and quote accordingly

### Gold Westcountry Arrival pack £58.00

A Bottle of Local Sharpham White Wine, Clotted Cream Fudge, Teoni's Devon Cookies, Burts Potato Chips hand cooked in Devon, Mini Preserves x4, Devon Chutney, Luscombe St Clements 2x 330ml.

### Gold Butler Service-booked in advance-depending on availability

**£80.00** for three hours waiter service of food beverage in your apartment, plus the cost of food & liquor ordered from our hotel menus. If longer required quoting accordingly.

Apartment room service delivery available, including gin bar trays, cheese & port board to your favourite cocktail or mezze platter charged as ordered from our apartment menus during your stay

Hot Tub: Use of your own private hot tub is available on request with a supplement of £60 for the duration of your stay.

DOGS: Well behaved dogs are welcome by arrangement and a charge of £12.00 per dog per day. Dogs must be kept on a lead in the hotel & grounds.

### Terms & Conditions of booking on rear of booklet.

## Apartment Booking Terms & Conditions

### Check-In Time On Day of Arrival:

Check in from 4pm onwards. Please advise us beforehand if you will be arriving after 11pm.

### Check-Out Time On Day of Departure:

Guests must vacate apartments and check out by 10am. The hotel reserves the right to incur charges if apartments are not vacated by this time. If available a late check out to 12pm may be arranged when a charge of £50.00 will be applied. Please enquire at Reception.

Release: We reserve the right to release rooms at 6.00 pm on arrival, unless advised.

### Cancellations & Insurance:

Once a booking is made the hotel reserves the right to charge 2/3rds of the booking total unless the apartment can be Re-let. We therefore recommend guests arrange holiday insurance is taken out to cover you in the event of cancellation for the value of the booking. We regret that no allowance can be made for meals not taken or for any temporary absence from the hotel, if booking on inclusive terms.

### Deposits:

A minimum of 25% is required to guarantee a reservation. Deposits are non refundable to secure a booking, balance to be arranged a minimum of six weeks prior to arrival.

### Damages

In the unlikely event of damage occurring to property an appropriate charge will be levied.

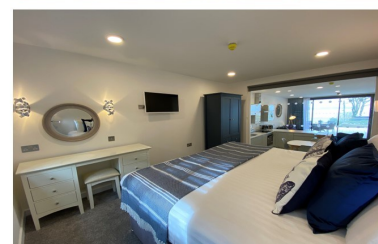
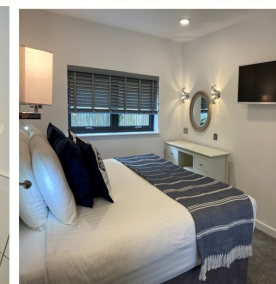
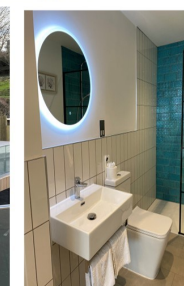
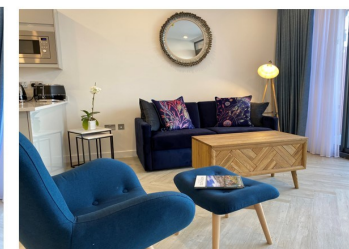
### Accessibility

We ask that Residents be physically able to evacuate to fire assembly point without assistance.

Please discuss any requirements with our reservations team when booking your stay.



## BHH Self Catering Apartments Tariff 2026



## The Berry Head Hotel, Brixham

Tel: 01803 853225

[www.berryheadhotel.com](http://www.berryheadhotel.com) | [stay@berryheadhotel.com](mailto:stay@berryheadhotel.com)